

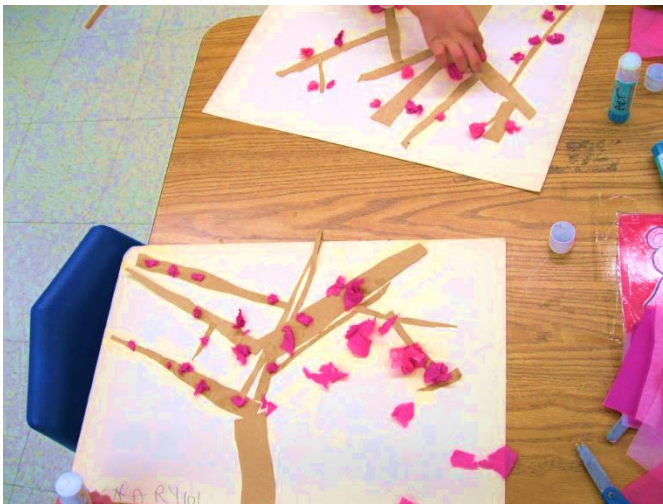
Cherry Blossom Branch

Materials: Paper, Coloring supplies (any), scissors, glue, colored paper- Or make your own colored paper, just color a whole a paper!

Directions:

1. Look at these slides for inspirational pictures of the beauty of cherry blossoms
[Cherry Blossom Trees.pdf](#)
2. Follow the steps to make a cherry blossom tree
AND
[WATCH MY VIDEO](#) ←CLICK

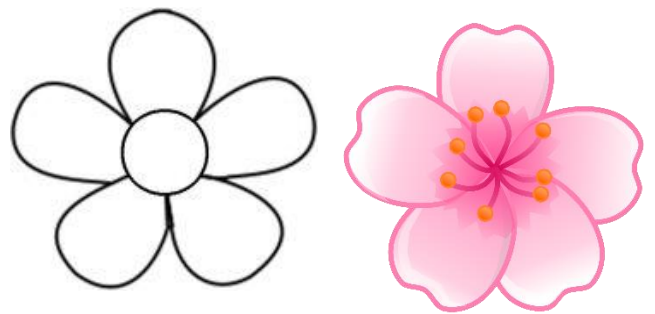
Project examples:



Step 1: Make your own colored paper: Choose a black or brown paper (pick one). These will be your branches. Cherry blossom trees have dark brown branches so you can choose which color you like better.

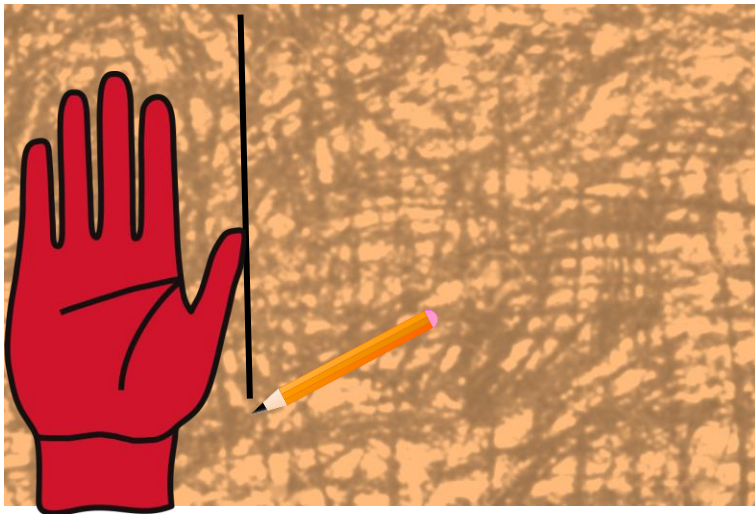


Make smaller colored paper that is: Pink, white, red, or purple (or a little of all of them) for the flower buds. You can also draw cherry blossom flowers, color them, and cut them out. Cherry blossoms have 5 petals:



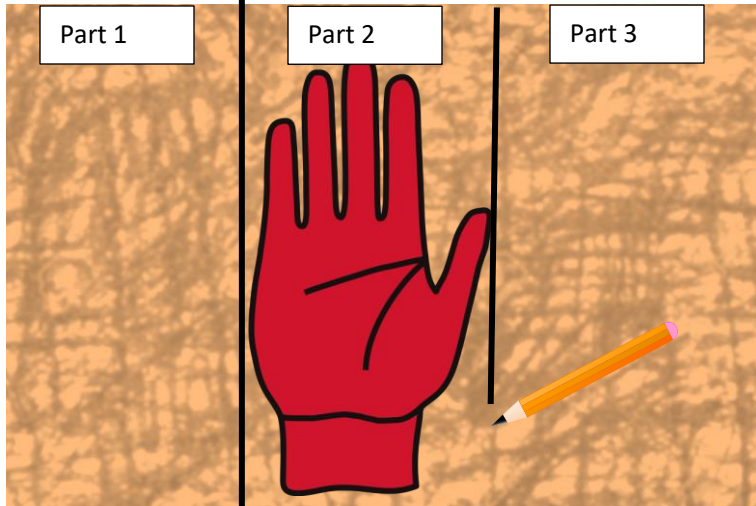
Step 2:

Turn it over and cut about ONE hand size measurement: Keep Fingers together and draw a line straight down. This is Paper PART 1



Step 3:

Do this again right next to the first line. ONE hand size measurement: Keep Fingers together and draw a line straight down. Cut it out. This is Paper Part 2.



Step 4: Tape, staple, or glue 2 pieces of white paper together to make your art Bigger/Longer

Step 5: Get Paper part 1 and glue it to a new paper at the bottom.

Step 6: Get Paper part 2, cut it in half and glue to the top of Part 1.

Step 7: Cut the 3rd left-over piece into some big, thick branches and small or skinny branches. Glue on top of part 2 and to the sides.

Step 8: Cut flowers and
Glue them all over or cut
out pieces, crumble them
and glue them

